

# Hello!



# *Today we are going to look at;*

- What modern slavery is and the Salvation Army's response*
- What the NRM is and what support is offered to people affected by slavery*
- Look at what it means to journey from victim to survivor*

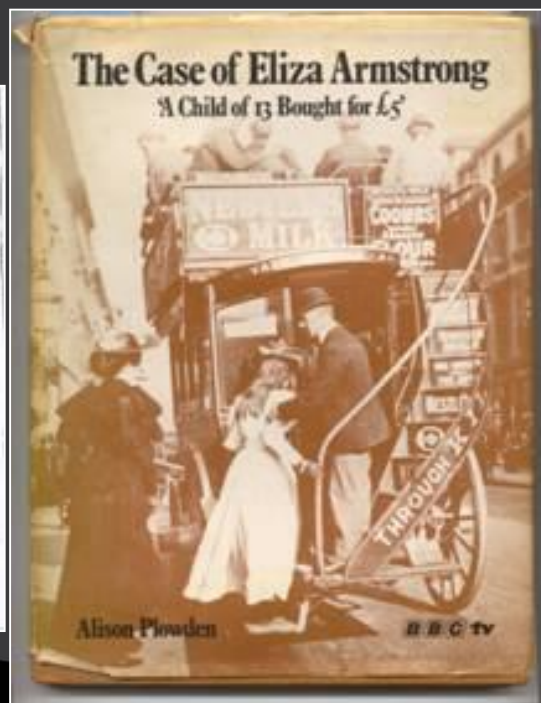


# Activity



# The Salvation Army's History

Since the 19th Century, The Salvation Army has been committed to stopping the trade in human beings. In 1885, Florence and Bramwell Booth campaigned to raise awareness of women and girls being bought and sold for exploitation in Victorian England.



# *The Salvation Army Today*

The Salvation Army is present in more than 131 countries and is combatting modern slavery and caring for victims all around the world.



# What is Human Trafficking and Modern Slavery?

**Human trafficking** is when a person is deceived or taken against their will. They are bought, sold and moved to a new location in order to be exploited and abused.

**Human trafficking** is the recruitment or movement of people by force, threat or deceit for exploitation

With **Modern Slavery** a person is not always moved. They are exploited, forced, threatened and deceived into working against their will.



# Types of Human Trafficking and Modern Slavery

Victims of human trafficking are often forced to do things they don't want to do. Traffickers use threats, violence and methods of control to exploit people who are vulnerable. Victims can be trafficked for:

- Domestic Service
- Welfare and benefit fraud, fraudulent use of victim's bank a/c
- Forced Marriage
- Organ Removal (eg kidney donation)
- Forced Labour (eg in a factory, restaurant or farm)
- Criminal Activity (eg begging, theft, illegal drug dealing)
- Sexual exploitation
- Slavery - which does not involve transporting the victim



# *Who are Victims of Trafficking?*

- Men and women
- Adults and children of all ages
- UK nationals and people from other countries
- People trafficked into the UK, out of the UK and within the UK
- People trafficked to other countries who escape to the UK



**DON'T BE TRAFFICKED**

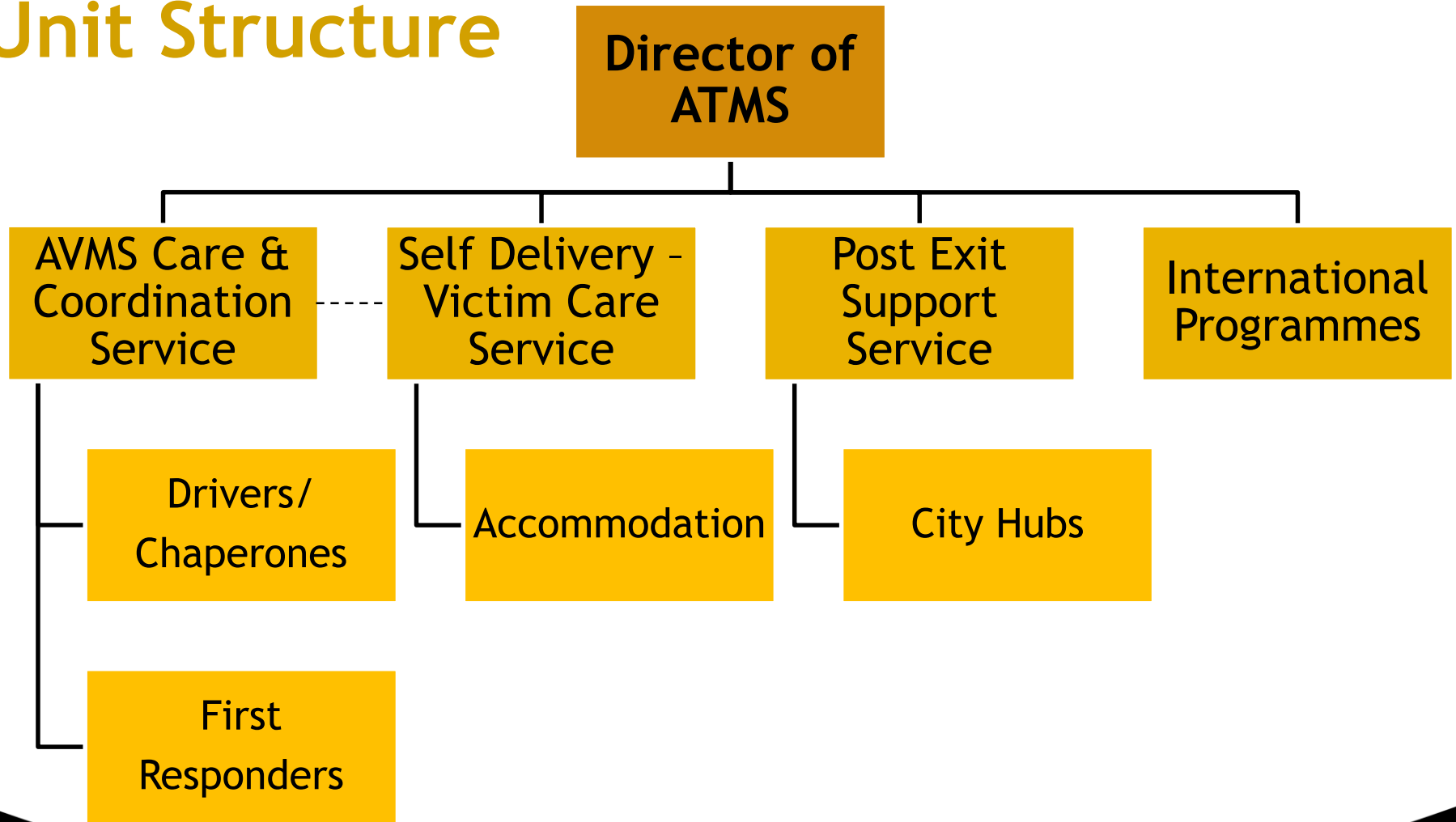


# Trafficking Indicators

- Show signs of physical or psychological abuse and untreated injuries
- Look malnourished or unkempt or appear withdrawn and neglected
- Seem under the control or influence of others
- Wearing the same clothes every day
- Not wearing safety equipment even if their work requires it
- Living in dirty, cramped or overcrowded accommodation
- Appear unfamiliar with their neighbourhood or where they work
- Rarely allowed to travel on their own
- Collected/dropped off on a regular basis early morning or late at night
- No control of their identification documents such as their passport
- Reluctant to seek help and avoid eye contact
- Fearful of police, don't know who to trust or where to get help
- Afraid of deportation, and risk of violence to them or their family



# Unit Structure



# How are we responding?

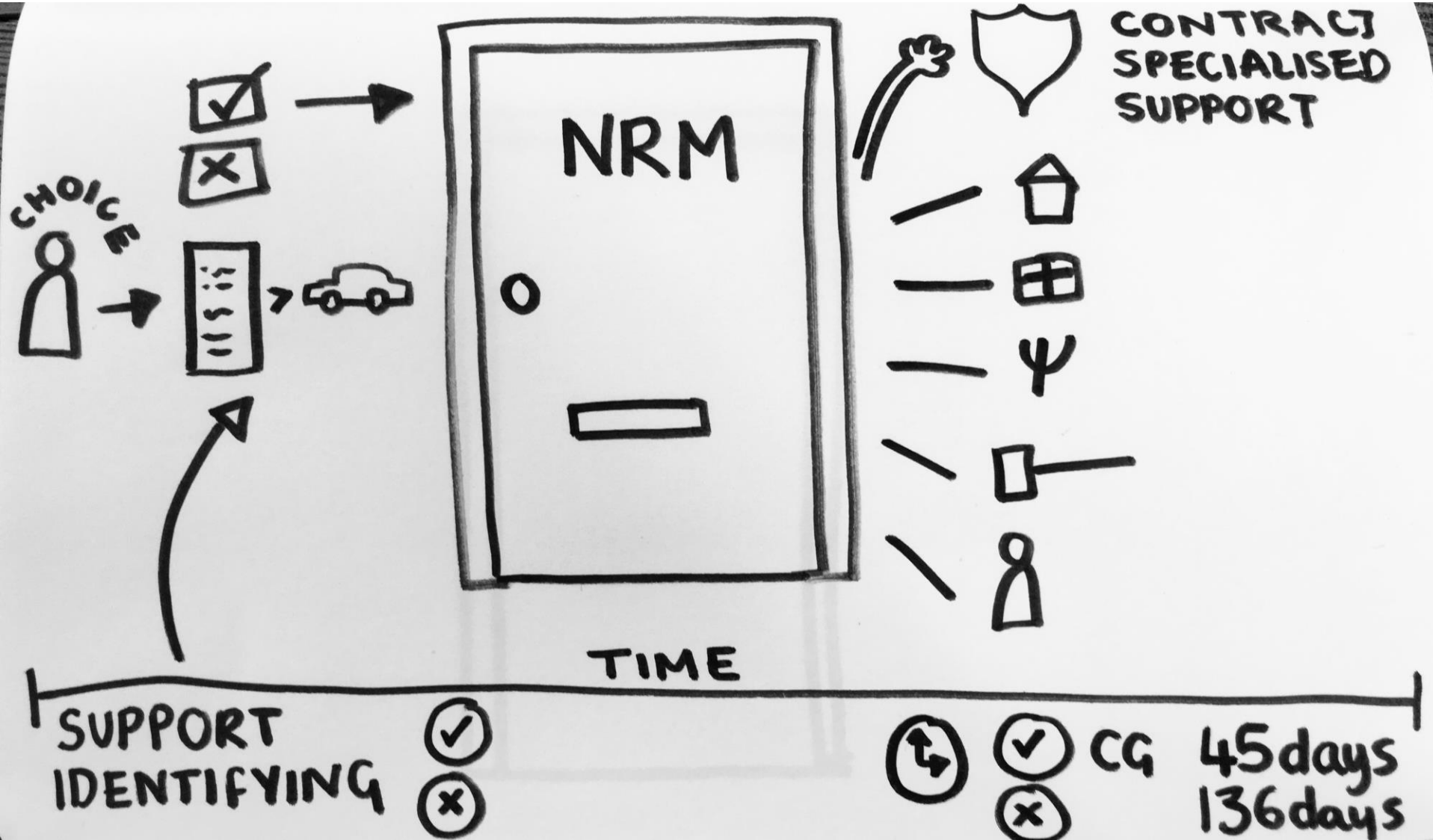
Since 2011 The Salvation Army has been the prime contractor for the government and with the help of sub-contractors has provided specialist support for adult victims of human trafficking in England and Wales.



# What is the NRM?

“The National Referral Mechanism (NRM) is a framework for identifying victims of human trafficking or modern slavery and ensuring they receive the appropriate support.”





# Activity



# Specialised Support NRM

- Safe and secure accommodation
- Material Assistance
- Psychological assistance
- Emergency medical treatment
- Translation and interpretation services
- Counselling and legal advice in a language they understand
- Advocacy for Specialist Services
- Assistance to enable their rights and interests to be presented and considered in criminal proceedings against offenders
- Access to education for dependant children of school age



# Specialised Support NRM

- Specialist support provided by **12** non-government organisations
- Over **400** beds in over **40+** safe houses across England and Wales
- **7** organisations providing outreach support in each geographical region of England and Wales





# *Impact of Trafficking*

- Lack of access to medical treatment
- Physical injury
- Sexual health issues
- Ritual abuse
- Post traumatic responses
- Lack of trust
- Feelings of guilt or shame
- Dependency
- Denial
- Depression



**DON'T BE TRAFFICKED**

# *Possible Impact of Trafficking*

## Physical impact

- Lack of access to medical treatment
- Physical injury
- Sexual health
- Ritual abuse

## Psychological impact

- Post-traumatic responses
- Depression/anxiety
- Feelings of guilt or shame
- Self-harm/substance use
- Suicidal ideation



**DON'T BE TRAFFICKED**

# *Possible Impact of Trafficking cont'd*

## Social impact

- Difficulty relating to others
- Lack of trust
- Dependency
- Isolation
- Difficulties seeking help



**DON'T BE TRAFFICKED**

*Moving on after NRM support and ongoing journey of recovery and independence*



**DON'T BE TRAFFICKED**

# Activity



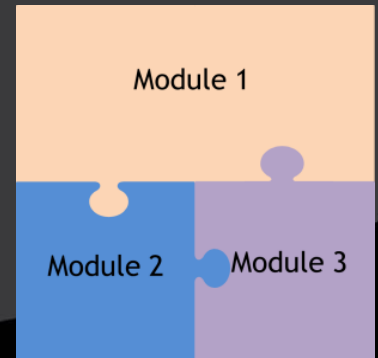
# SA Survivor Support Programme

3 modules: formal registration for clients exiting the NRM provision

- Module 1: drop-in style, onsite group setting
- Module 2: group setting, offsite community focus
- Module 3: structured mentoring
- Community-Mentors: Partners with NCC pilot

## Support Structure

- Local Programme Coordinator
- Volunteers



# Modern Slavery- What can we do about it?

- Find out about modern slavery
- Tell others about it
- Campaign on this and related issues
- Think about the things you buy
- Support anti slavery projects
- Be aware in your professional learning and capacity



# Modern Slavery Helpline

0800 012 1700

